

MONTHLY MEMBERSHIP PROGRESS REPORT

District 4 A1

Results as of: 6/30/2024

GMT:

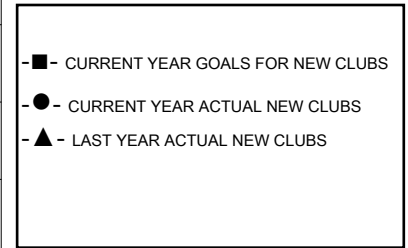
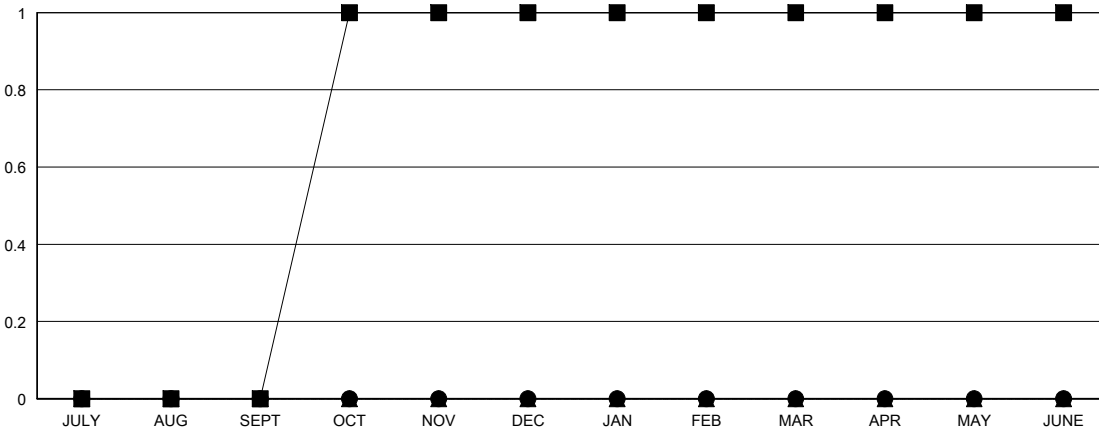
LOCATION CALIFORNIA

GMT CA

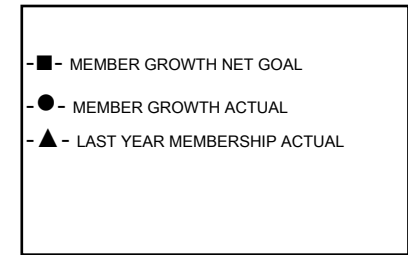
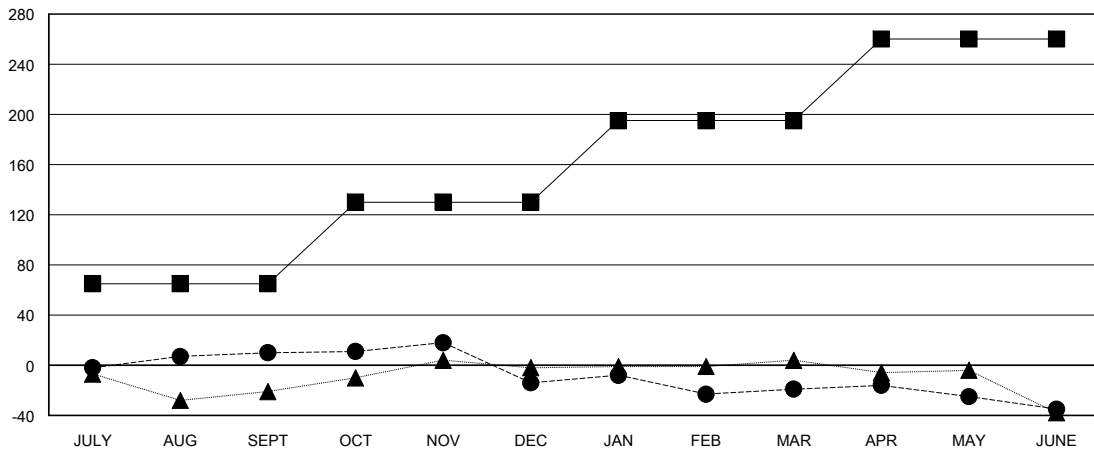
Clubs			
RESULTS FOR 2023-2024			
QUARTER	NEW CLUB GOAL	NEW CLUBS	DROPPED CLUBS
JULY/AUG/SEPT	0	0	0
OCT/NOV/DEC	1	0	2
JAN/FEB/MAR	0	0	1
APR/MAY/JUNE	0	0	0

Members			
RESULTS FOR 2023-2024			
QUARTER	MEMBER GROWTH NET GOAL	MEMBER GROWTH ACTUAL	DROPPED MEMBERS ACTUAL (including transfers)
JULY/AUG/SEPT	65	63	50
OCT/NOV/DEC	65	43	64
JAN/FEB/MAR	65	73	70
APR/MAY/JUNE	65	60	66

GOALS AND ACTUAL NEW CLUBS CUMULATIVE



GOALS AND ACTUAL MEMBERS CUMULATIVE



DROPPED CLUBS: 3	
DROPPED MEMBERS	
DECEASED	38
CLUB CANCELLED	14
OTHER	196
TOTAL	248

38 CLUBS OF 51 ADDED 1 OR MORE NEW MEMBERS

GENDER DISTRIBUTION	
MALE	1,355 (78.41%)
FEMALE	373 (21.59%)

[CLICK HERE FOR CUMULATIVE MEMBERSHIP DATA](#)

TOTAL FAMILY UNIT MEMBERS	217
FAMILY MEMBERS PAYING HALF DUES	111